

FRANK FLICK A.C.S.**Cinematographer / Camera Operator**

_ German citizen, Australian residency since 1989

_ Languages: English / German

Agent: Auscrew +61-2-9427 4444

mobile: +61-418 698 663

e-mail: flickus1@mac.com

website: www.frankflick.com

CV

FILM AND TV CREDITS LISTED OVER THE FOLLOWING PAGES

In addition to listed long form projects I have lensed over 300 TVCs as DoP for Advertising Agencies in Australia, USA, Asia and Europe

SELECTED CLIENTS

NIKE . TOYOTA . LEVI'S . SKODA . HYUNDAI . PEPSI . TELSTRA . OPTUS . PANASONIC . SONY .
L'OREAL . LUX . ETIHAD AIRWAYS . CASTROL . LG . INDIA TOURISM . INTEL . VODAFONE . GOOGLE .
JC PENNYS . BAYER . NESTLE . MEDIBANK . LADBROKES . HANKOOK TYRES . YAMAHA .

SELECTED DIRECTORS

Michael Gracey _ Harvey B. Brown _ Andy Morahan _ Paul Butterworth _ Bruce Hunt _ Di Yee
Armand de Saint-Salvy _ Karina Taira _ Bo Krabbe _ Peter Bloomfield _ Soo Kim _ Sunhil Sippy
Scott Otto Anderson _ Ryan Renshaw _ Ben Hartenstein _ Kobayashi _ DirectorX _ Sung Ho Lee

NOTABLE**QUALIFICATIONS**

_as D.o.P:

VFX Heavy Shoots / Stunts: Fights - Car chases - Edge Arm Car - Boat chases / Miniatures /
Extensive Studio Lighting / Aerial Cinematography / Beauty / Hair / Cars

_as Camera Operator:

Edge Arm Camera Operator / Remote Heads / Telescopic Cranes / Stunts / Cable Cams /
Handheld Gimbals / Operating stunts in harness on wire rigs

**INTERNATIONAL
EXPERIENCES**

Australia (residence) . USA . Canada . UK . Germany . Romania . India . China . South Korea .
New Zealand . South America . South Africa . Mexico . Thailand . Malaysia . Indonesia .
Sri Lanka . Vietnam . New Guinea . South Pacific

CREDITS – FILMS / TV DoP and 2nd Unit DoP

PRODUCTION	DIRECTOR	POSITION
ASCENDANT CAST: Charlotte Best, Jonny Pasvolski FEATURE . Daydream Pictures_Maslow Entertainment -----	Ant Furlong	DOP
INTERCEPTOR _ 2nd Unit CAST: Elsa Pataky, Luke Bracey, Rhys Muldoon FEATURE . Ambience Entertainment_Netflix -----	Matthew Reilly 2 nd Unit_Stuart Beattie_Ingrid Kleinig	2 nd Unit DOP
TEN POUND POMS _ 2nd Unit CAST: Warren Brown, Tara Morice, Emma Hamilton TV-DRAMA, 6 x 1 hr. . Eleven Film_BBC / Stan -----	Ana Kokkinos 2 nd Unit_John Walton	2 nd Unit DOP
WELLMANIA CAST: Celeste Barber, Rowan Witt, Remy Hii TV-DRAMEDY , 8 x 30 min. . Fremantle Entertainment_Netflix -----	Helena Brooks Erin White	DOP -part- (CoVid replacement)
LIVING UNIVERSE CAST: Gentry Lee, Sara Seager, Steve Squyres FEATURE DOCUMENTARY. Essential Media_ARTE -----	Richard Smith	DOP
THE LAST RACE CAST: Tony Poli, Mark Lee, Geraldine Hakewell TV-DRAMA . Alagna Films_ABC -----	Jeremy Cumpston	DOP
ORANGE _ 2nd Unit CAST: Genelia D'Souza, Ram Charan FEATURE . Anjana Productions -----	Bhaskar 2 nd Unit_Harry Dakanalis	2 nd Unit DOP
OPPOSABLE THUMBS CAST: Nick Baldas, Michael Plumb, Adele Vuko TV-COMEDY (PILOT) . Baldas Plumb Productions -----	Nick Baldas Michael Plumb	DOP
THE SKY IS ALWAYS BEAUTIFUL CAST: Mirrah Foulkes, Russell Kiefel, Adelaide Clemens DRAMA-SHORT . Magic Films WINNER ACS-GOLD AWARD (NSW) FOR BEST CINEMATOGRAPHY -----	Jeremy Cumpston	DOP
THE GREAT AUSTRALIAN RACE RIOT CAST: Peter FitzSimons DOCUMENTARY , 3-part . Essential Media -----	Sally Aitken	DOP (2-Episodes)

. credits cont'd next page .

CREDITS – FILMS / TV DoP and 2nd Unit DoP

. cont'd.

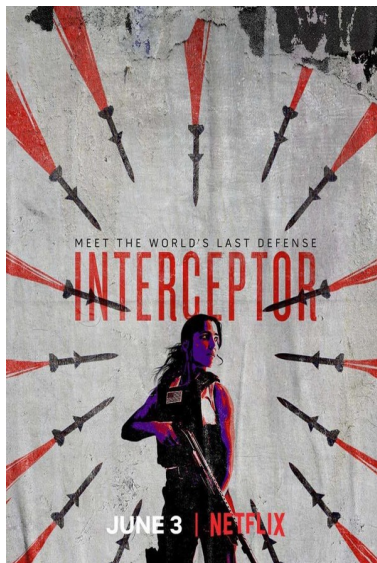
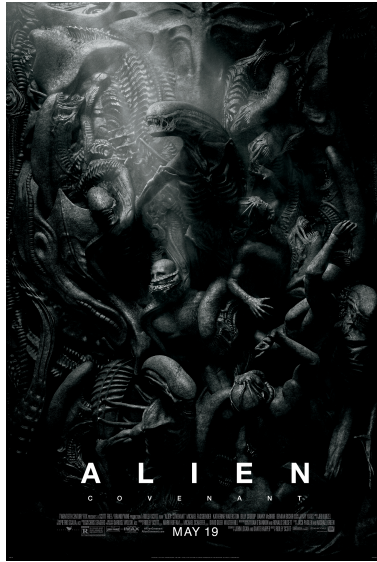
PRODUCTION	DIRECTOR	POSITION
WHITLAM: THE POWER AND THE PASSION CAST: Judy Davis, David Frost, Peter Hayes DOCUMENTARY, 2 x 1 hr. . Beyond Entertainment	Paul Clarke	DOP (shared credit)
HOWARD ON MENZIES CAST: Linda Cropper, John Howard, James Carleton DOCUMENTARY, 2 x 1 hr. . ABC	Simon Nasht	Add. Photography
MIRROR MIRROR CAST: Roy Billing DRAMA-SHORT . Wintertime Films	John Winter	DOP
POV 'FREE' CAST: Jason Clarke, Luke Carroll, Rai Fazio, Lisa Flanagan CONCEPT FEATURE (1 Script – 8 Films) . Magic Films <i>WINNER WRITER'S CHOICE AWARD</i>	Jeremy Cumpston	DOP
GETTING FRANK GEHRY CAST: Frank Gehry DOCUMENTARY . Essential Media	Sally Aitken	DOP (contributing)
WIDE OPEN ROAD CAST: Jennifer van Heeckeren, Steve Bisley DOCUMENTARY, 2 x 1 hr. . Bombora Films	Paul Clarke	Add. Photography
EMERGENCE CAST: Pippa Black, Oliver Ackland DRAMA-SHORT . Daydream Films	Ant Furlong	Add. Photography
WHEN THEY CLOSE THEIR EYES SHORT . Almost Arctic Films Films <i>WINNER PANA-VISIONS AWARD FOR BEST CINEMATOGRAPHY</i>	Frank Flick	Director / DOP

. credits cont'd next page .

CREDITS – FILMS / TV _____ CAMERA OPERATOR

. selected . cont'd .

PRODUCTION	DIRECTOR	DOP	POSITION
FIGHTING SEASON			
CAST: Jay Ryan, Ewen Leslie, Kate Mulvany TV-MINI SERIES . Goalpost Pictures	Kate Woods	Jeffrey Simpson ACS	B - Camera (dailies)
.....			
HACKSAW RIDGE			
CAST: Andrew Garfield, Richard Pyros US-FEATURE . Sony Pictures	Mel Gibson	Simon Duggan ACS	Camera Operator (dailies)
.....			
SUPERMAN RETURNS _ 2nd Unit			
CAST: Brendan Routh, Kate Bosworth, Kevin Spacey US-FEATURE . Warner Bros.	Bryan Singer 2 nd Unit_Dan Bradley	Newton Thomas Sigel ASC 2 nd Unit_Ross Emery ACS	2 nd Unit_ B - Camera
.....			
STEALTH			
CAST: Josh Lucas, Jennifer Biel, Jamie Foxx US-FEATURE . Sony Pictures	Rob Cohen	Deran Semler ASC, ACS	C - Camera
.....			
THE MATRIX-RELOADED_ THE MATRIX-REVOLUTIONS _ 2nd Unit			
CAST: Keanu Reeves, Carrie-Anne Moss, Hugo Weaving US-FEATURE . Warner Bros.	Wachowski Bros. 2 nd Unit_Kimble Rendall	Bill Pope ASC 2 nd Unit_Ross Emery ACS	2 nd Unit_ A - Camera part Cam Operator otherwise 1st AC
.....			



FRANK FLICK A.C.S. Cinematographer / Camera Operator

